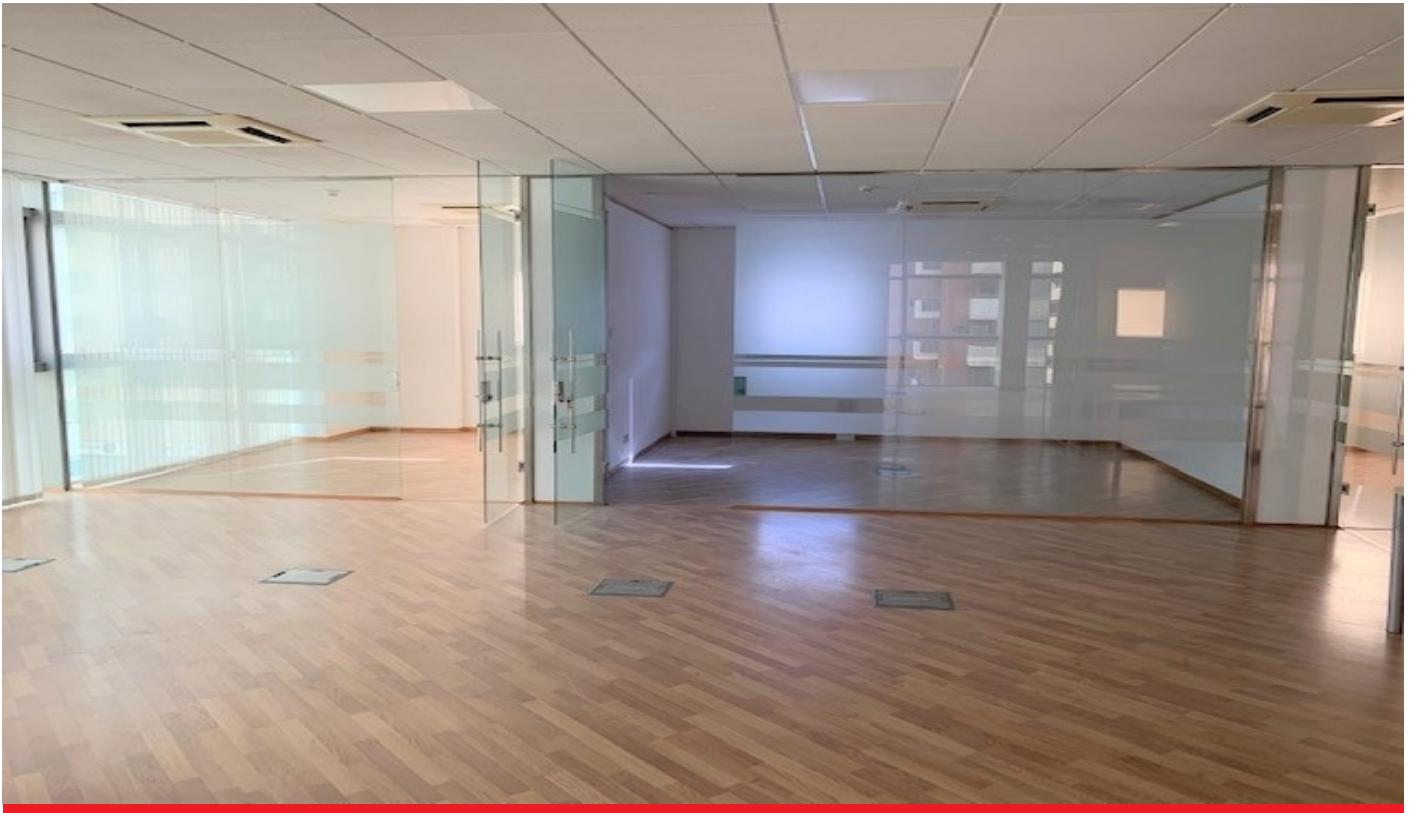


WATERPORT PLACE

£4,000 pcm



- Ref: KHC16
- Category 2: No
- Interior Size: 221m²
- Exterior Size: TBC
- Service charges: 850
- Current rates: 1167

DESCRIPTION

Modern office available to rent on the second floor in Waterport Place. The property comprises 221m² of internal space. Flexible lease terms. Service charges £2551 per quarter and rates £1167 per month. The office suite consists of :

Reception area
3 individual offices
Kitchenette
Server room
Wooden flooring
Fitted with CAT 5 and 6 cabling
3 months deposit

PROPERTY FEATURES